

SKIN DEVELOPMENT

Throughout pregnancy, **your baby's skin is enveloped in a natural film** called "vernix caseosa". Thanks to its nourishing and antioxidant properties, **this impermeable barrier** preserves your baby's fragile skin.

This natural protection **disappears 2 to 3 days after birth.**

When this occurs, like a baby penguin covered with fine down - far from the dense plumage that protects an adult penguin from the cold - **your baby's immature skin is exposed** to all the aggressions within its new environment.



ABC Derm

More than just skincare, ABCDerm helps parents to manage baby's daily care and needs.

BIODERMA BABY CARE, THE FIRST MOBILE APPLICATION TO ACCOMPANY YOUR BABY'S SKINCARE AND NURTURE.



An app that evolves as baby grows!
Advice and playlists that adapt to his or her age.



NA05 - SAS au capital de 43 474 650 € - 535 236 418 RCS Aix-en-Provence - Siège social : 355, rue Pierre Simon Laplace, 13290 Aix-en-Provence, MN - AK02/17.

BIODERMA
LABORATOIRE DERMATOLOGIQUE

ABC Derm

NURTURE TODAY THEIR SKIN FOR TOMORROW.

The dermato-paediatric skincare. High tolerance.



BIOLOGY AT THE SERVICE OF DERMATOLOGY

BIODERMA
LABORATOIRE DERMATOLOGIQUE

THE SKIN, A LIVING ORGAN

This physical barrier between inside and out, between ourselves and others, **protects our body** and allows us to exercise our sense of touch.

An **organ** in its own right, it is also a messenger, with a direct **connection to the brain.**

A place for **exchange and interaction.**

An essential part of the **immune system.**

It performs a multitude of **biological, chemical and psychological functions.**

Your baby's fragile skin will evolve over the coming weeks and months before maturing into their adult skin.

Bioderma has therefore developed a range of **high-tolerance dermo-paediatric products** that protect, educate and nourish your baby's skin **from their very first days**, better preparing **their skin for tomorrow**.

THE SKIN ITSELF

INSPIRED BIODERMA TO FIND A WAY TO SAFELY PROTECT BABIES' AND CHILDREN'S SKIN. IN A LASTING WAY.



This range was created in line with ABCDerm's dermatological commitments

- SAFETY:** The exclusion of any ingredients not proven to be 100% safe:
 - No paraben or phenoxyethanol
 - No chlorphenesin, chlorhexidine or phthalates
 - No BHA, BHT, MIT-MCIT
 - No colorants, no essential oils.

- EFFICACY:** Formulas containing the purest molecules at optimal doses.

- TOLERANCE:** Limited ingredients to guarantee safety and comfort.

- TRACEABILITY:** All our products are monitored at each production stage, so you can use them with complete confidence.



ABCDerm Gel moussant

MILD SOAP-FREE CLEANSING GEL THAT RESPECTS BABIES' SKIN

- ✓ Preserves the integrity of baby's skin barrier
- ✓ Gently cleanses baby's scalp and skin
- ✓ Leaves skin and hair soft and supple



Light mousse for playful bath-time fun.

Can be used from baby's very 1st day



GENTLE ROCKING MOVEMENTS MAKE IT EASIER TO CALM BABY, HELPING HIM OR HER TO RELAX



DURING CARE, COMFORT BABY BY PLACING YOUR HAND ON HIS OR HER BELLY AND SPEAKING SOFTLY



ABCDerm Hydratant

MOISTURISING MILK CARE FOR SOFTENED AND PROTECTED BABIES' SKIN

- ✓ Long-lasting strengthens baby's skin barrier
- ✓ Efficient protection from skin dryness
- ✓ Leaves skin soft and hydrated all day long

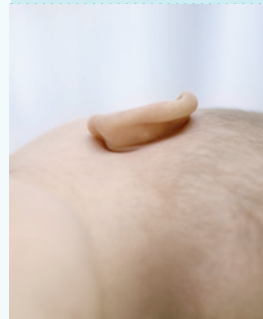


Fresh, creamy and delicately scented.

Can be used from baby's very 1st day



CHECK REGULARLY BEHIND BABY'S EAR FOR REDNESS AND DRY SKIN



WARM UP PRODUCT WITH YOUR FINGERTIPS BEFORE APPLYING, TO AVOID SURPRISING BABY WITH TEMPERATURE DIFFERENCES



CLEANSER WITHOUT RINSING



ABCDerm H2O lingettes

CLEANSING POWER OF MICELLAR WATER IN HANDY WIPES

DIAPER CHANGE

ABCDerm Change intensif

DIAPER RASH REPAIRING AND SOOTHING CREAM. HIGH TOLERANCE



HAIR CLEANSING

ABCDerm Shampooing

RESPECTS NATURAL HAIR BALANCE FOR SILKY AND EASY-TO-STYLE HAIR



BABY MASSAGE

ABCDerm Huile douceur

SOFTNESS OIL FOR NOURISHED AND SOOTHED BABIES' SKIN



SUN PROTECTION

ABCDerm Solaire SPF50+

VERY HIGH MINERAL PROTECTION FOR OPTIMAL TOLERANCE

