

Dermo-cosmetic protocol for your patients with skin weakened by some treatments or pathologies

SUPPORT WEAKENED SKIN

DRYNESS

✓ CHEMOTHERAPY ✓ DIABETES ✓ DIALYSIS



Atoderm
Xereane

-95% DRYNESS⁽¹⁾

SUPERFICIAL SKIN IRRITATIONS AND SCARS

✓ CHEMOTHERAPY ✓ RADIOTHERAPY ✓ SURGERY



Cicabio
Restor

-70% SUPERFICIAL SKIN IRRITATIONS⁽²⁾

CLEAN WEAKENED SKIN



Atoderm
Intensive Gel moussant

GENTLE CLEANSING GEL PURIFYING AND SOOTHING FEELINGS OF DISCOMFORT

Cleaves gently
Decreases feelings of discomfort

LD-AB1(04/34)Oct 2019

⁽¹⁾ An observational, prospective and multicentric study with 2 visits (D0, D28). 40 subjects were included by 9 investigating oncologists, 2019.

⁽²⁾ A multicenter, double blind, prospective, randomized controlled [1:1 ratio] study with three visits (D0, D7 and D28) involving 70 subjects included by eight oncologists 2019.

BIODERMA is a brand built on ecobiology which is at the heart of NAOS approach to respect the skin ecosystem and preserve its health. Lastingly. www.naos.com

Care first. ✕ N A O S

New dermo-cosmetic care for skin weakened by some treatments or pathologies

MEDI-SECURE development approach



1 |

Carefully selected ingredients and active ingredients

2 |

Practical and hygienic
Tubairless™



3 |

Guaranteed results backed
by clinical studies under medical
and oncological supervision

Our approach respects NAOS ecobiology principles to better preserve the skin ecosystem and to strengthen its natural mechanisms. Rather than over-treating the skin, it must learn how to function properly.

BIOLOGY AT THE SERVICE OF DERMATOLOGY

BIODERMA
LABORATOIRE DERMATOLOGIQUE

DRYNESS INDUCED BY SOME TREATMENTS OR PATHOLOGIES



Atoderm Xereane

SOOTHING NOURISHING DERMO-COSMETIC BALM FOR SKIN DRIED BY SOME TREATMENTS OR PATHOLOGIES



- ✓ CHEMOTHERAPY
- ✓ DIABETES
- ✓ DIALYSIS



Nourishes
and replenishes lipids



Soothes
feelings of discomfort



Tubairless™
practical and hygienic

Tube 150 ml

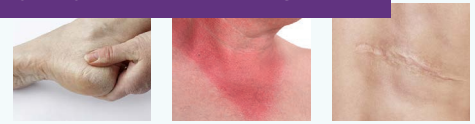
Apply once or twice a day to face and/or body after cleansing

✚ MEDI-SECURE APPROACH

Atoderm Xereane

INGREDIENTS : AQUA/WATER/EAU, GLYCERIN, BUTYROSPERMUM PARKII (SHEA) OIL, BUTYLENE GLYCOL, PANTHENOL, JOJOBA ESTERS, BEHENYLALCOHOL, HYDROGENATED CASTOR OIL, SQUALANE, SUCROSE STEARATE, HELIANTHUS ANNUUS (SUNFLOWER) SEED WAX, PENTYLENE GLYCOL, SODIUM CITRATE, SUCROSE LAURATE, SODIUM POLYACRYLATE, CITRIC ACID, 1,2-HEXANEDIOL, CAPRYLYL GLYCOL, POLYACRYLATE CROSS-POLYMER-6, XANTHAN GUM, POLYGLYCERIN-3, MANNITOL, XYLITOL, RHAMNOSE, ACACIA DECURRENS FLOWER WAX, ACETYL DIPEPTIDE-1-CETYL ESTER. [BI 755]

SKIN WEAKENED BY SOME CANCER TREATMENTS



Cicabio Restor

PROTECTIVE SOOTHING DERMO-COSMETIC CARE FOR SKIN WEAKENED BY SOME CANCER TREATMENTS



- ✓ CHEMOTHERAPY
- ✓ RADIOTHERAPY
- ✓ SURGERY



Repairs
skin barrier



Soothes
feelings of discomfort



Protects
the epidermis



Tubairless™
practical and hygienic

Tube 100 ml

Apply once or twice a day to affected areas after cleansing

✚ MEDI-SECURE APPROACH

Cicabio Restor

INGREDIENTS : AQUA/WATER/EAU, BUTYROSPERMUM PARKII (SHEA) OIL, GLYCERIN, PANTHENOL, BUTYLENE GLYCOL, BEHENYLALCOHOL, HYDROGENATED CASTOR OIL, PROPANEDIOL, JOJOBA ESTERS, CAPRYLOYL GLYCINE, SQUALANE, SUCROSE STEARATE, HELIANTHUS ANNUUS (SUNFLOWER) SEED WAX, PENTYLENE GLYCOL, SODIUM CITRATE, SUCROSE LAURATE, SODIUM POLYACRYLATE, POLYACRYLATE CROSS-POLYMER-6, XANTHAN GUM, SODIUM HYDROXIDE, POLYGLYCERIN-3, MANNITOL, SODIUM HYALURONATE, XYLITOL, RHAMNOSE, ACETYL DIPEPTIDE-1-CETYL ESTER, ACACIA DECURRENS FLOWER WAX. [BI 744]