

# BIODERMA

LABORATOIRE DERMATOLOGIQUE

**1 patients out of 2**  
OF RENAL FAILURE PATIENTS  
**HAVE AT LEAST ONE**  
**DERMATOLOGICAL COMPLICATION\***

*And what about you?*



\*Kurban MS, Boueiz A, Kibbi A-G. Cutaneous manifestations of chronic kidney disease. Clin Dermatol. 2008 May;26(3):255-64.

ECOBIOLOGY AT THE SERVICE OF DERMATOLOGY

Learn more about NAOS, French ecobiology company  
founder of BIODERMA, on [www.naos.com](http://www.naos.com)





## ON YOUR SIDE SUPPORTED YOUR WEAKENED SKIN

Taking into account skin ecosystem, Laboratoire BIODERMA had **specifically developed** dermocosmetic products to address the needs of skin weakened by treatments (chemotherapy, radiotherapy,...) and pathologies (**cancer, diabetes, renal failure**).

The skin represents a **dynamic ecosystem**, in interaction with its environment. However, this ecosystem is fragile and can, during certain treatments be **unbalanced**. Indeed, certain characteristics of the skin make it an organ specifically and frequently affected **during treatments or pathologies**.

**Early intake is recommended** to avoid worsening of symptoms.

### ⊕ MEDI-SECURE APPROACH

To develop **safe & efficient** products taking into account the specificities of skins weakened by treatments and pathologies.



#### Carefully selected ingredients

and active ingredients that are recognised by health professionals to guarantee optimum safety



#### Guaranteed results

backed by clinical studies under medical and oncological supervision



#### Practical and hygienic

packaging to facilitate use and improve daily life

**850 million**

people worldwide are affected  
by kidney disease<sup>(1)</sup>

**+50%**

of renal failure patients have  
at least one dermatological  
complication<sup>(2)(3)</sup>

(1) <https://www.theisn.org/blog/2020/11/27/more-than-850-million-worldwide-have-some-form-of-kidney-disease-help-raise-awareness/>.

(2) Nunley JR, Hogan DJ, Vinson RP, Chan EF, Elson DM. Dermatologic Manifestations of Renal Disease. 2012.

(3) Kurban MS, Boueiz A, Kibbi A-G. Cutaneous manifestations of chronic kidney disease. Clin Dermatol. 2008 May;26(3):255-64.

# WHAT IS XEROSIS?

Xerosis is the medical term for abnormally **dry skin**. This name comes from the Greek word "xero," which means dry.<sup>(1)</sup> Xerosis is the most frequent skin manifestation in dialysis patients. Among patients with chronic renal failure, it has been suggested that those on dialysis have the most skin dryness.<sup>(2)</sup>

**Symptoms:** Dry skin can be **rough, flaky, red**, and sometimes **painful**. It's often caused by not having enough oil and water in the layers of the skin.<sup>(3)</sup>

**40%**  
TO **90%**  
in chronic renal failure patients  
suffer from xerosis<sup>(4)</sup>

(1) Dry skin. (n.d.).

(2) Mayo Clinic Staff. (2016, October 27). Dry skin: Symptoms and causes.

(3) M. Mailhot, "pharmacothérapie La prise en charge des toxicités cutanées induites par les inhibiteurs des récepteurs du facteur de croissance épidermique," vol. 45, pp. 246–260, 2012.

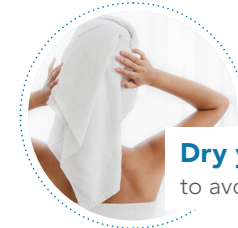
(4) O. Falodun et al., « Skin Changes in Patients with Chronic Renal Failure », Saudi Journal of Kidney Diseases and Transplantation, 22(2):268-272, 2011.

## DAILY ADVICE<sup>(5)</sup>

*Do*



Use a **gentle hygiene product**.



**Dry yourself gently** to avoid damaging skin.



**Apply skin care cream** once at twice a day and within 15 minutes of showering.



**Cut your nails** to avoid scratching.

*Don't*



**Avoid long bath.**



**Avoid scrubs** which damage the skin.



**Do not wash** with overly **hot water**.

(5) Lacovelli, Nicola Alessandro et al. "Topical treatment of radiation-induced dermatitis: current issues and potential solutions." *Drugs in context* vol. 9 2020-4-7. 12 Jun. 2020. doi:10.7573/dic.2020-4-7.

# Atoderm Xereane

Soothing nourishing balm for skin dried by some treatments or pathologies

## BALM THAT REDUCES SKIN DRYNESS AND ASSOCIATED DISCOMFORT **IMMEDIATELY & LASTINGLY**

**CHRONIC RENAL FAILURE/ DIALYSIS**



**REGENERATES & REPAIRS THE SKIN**

(D-panthenol)

**REDUCES PAIN & ITCHING**

(Technology: Antalgicine)

**REDUCES REDNESS & INFLAMMATION**

(Rhamnose, Mannitol, Xylitol)

**90%**

Of subject found effective to very effective\*

**-73%**  
for roughness and redness\*

**-91%**  
of scaling\*

Apply **once or twice** a day to face and/or body

Suitable for adults and children from the age of 3



NO PARABEN



NO FRAGRANCE



SAFE INGREDIENTS



TESTED WITH HEALTHCARE PROVIDERS

\*Efficacy and tolerance assessment of ATODERM XEREANE on renal dialysis-induced xerosis.

**+** **MEDI-SECURE APPROACH**

Julien, 32 years old  
Dialysis  
5 years ago



# "BY MY SIDE SUPPORTING MY WEAKENED SKIN"

MORE ABOUT RENAL FAILURE SKIN SIDE EFFECTS

## MEDI-SECURE APPROACH

respects NAOS ecobiology principles to better preserve the skin ecosystem and to strengthen its natural mechanisms. Rather than over-treating the skin, it must learn how to function properly.

NAOS, SAS with a capital of € 43,474,650, R.C.S. Aix-en-Provence B535 236 418, 355 rue Pierre-Simon Laplace  
13290 Aix-en-Provence. FM-AB(0393)Juin2022

*Talk about it!*

ECOBIOLOGY AT THE SERVICE OF DERMATOLOGY

Learn more about NAOS, French ecobiology company  
founder of BIODERMA, on [www.naos.com](http://www.naos.com)

