

Atoderm Intensive eye TO USE DAILY

DURING ECZEMA FLARE-UPS



- Soothes irritating & itching
- Repairs eyelid skin
- Gently cleanses the eyelids

Use daily alone or in association with dermocorticosteroids

IN REMISSION



- Moisturizes & nourishes
- Reinforces the skin barrier
- Cleanses & removes make-up

DID YOU KNOW ?

After an eczema flare-up, the eyelid skin appears **repaired on the surface**, but it is **still weakened**.

Thus, it is important to continue to take care of it properly to **limit relapse risk**.

DAILY TIPS TO TAKE CARE OF YOUR EYELIDS

SIMPLE GESTURES



Hand hygiene

Wash your hands several times a day to reduce the risk of contact between your eyelid and the irritants or allergens.



Choice of cosmetic products

Choose a light make-up. Avoid waterproof mascara and choose eyeshadows without glitter.



Sunglasses & Pollen

Protect your eyes from pollen by wearing your sunglasses regularly.

THE GOOD REFLEX

Recurrent eyelid irritation? **Consult an allergist!**

- Identify the causes of eyelid irritations
- Implement, if necessary, an efficient medical treatment
- Give some tips and good habits

**#TOGETHER
FACINGECZEMA**

BIOLOGY AT THE SERVICE OF DERMATOLOGY

Learn more about NAO, French ecobiology company founder of BIODERMA, on www.naos.com



BIODERMA

LABORATOIRE DERMATOLOGIQUE

Atoderm Intensive eye

Your daily
3-in-1 gesture

IRRITATED EYELIDS



DERMATOLOGICAL
INNOVATION



NAOS, SAS with a capital of € 43,474,650 R.C.S. Aix-en-Provence B535236418, 355 rue Pierre-Simon Laplace 13290 Aix-en-Provence, LB-CB (0488) Septembre 2021

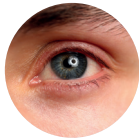
EYELID IRRITATIONS

A FREQUENT ISSUE

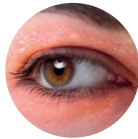
WHAT ARE THE SYMPTOMS ?



ITCHING



DRYNESS



REDNESS



SWELLING

WHAT ARE THE CAUSES ?

Eyelid irritations are due to 3 forms of **ECZEMA**

FROM THE OUTSIDE IN

1 - Allergic contact dermatitis

Reaction to allergen contact from the immune system after a sensitisation phase.

2 - Irritative contact dermatitis

Immediate reaction on contact with the irritant

FROM THE INSIDE OUT

3 - Atopic dermatitis

Chronic skin condition likely genetic.

DID YOU KNOW ?

Pollen is one of the most frequent causes of allergic and irritative contact dermatitis.

That's why eyelid irritation is so common in spring !

Atoderm Intensive eye

Daily 3-in-1 for irritated eyelids:
Soothes, repairs & removes make-up



Tube 100ml

EXPERT EYELID CARE

CLINICALLY PROVEN EFFICACY

IMMEDIATE EFFICACY ON EYELID IRRITATIONS

CLEANSING EFFICACY

-83%

of accumulated pollen allergen⁽¹⁾

SOOTHING EFFICACY

ultra-soothing for

93%

of patients⁽²⁾

LONG-LASTING EFFICACY ON EYELID IRRITATIONS

BARRIER EFFICACY

Helps to prevent pollen accumulation⁽¹⁾

PREVENTION EFFICACY

93%

Helps to delay eyelid irritations⁽²⁾



Rich and creamy texture

(1) Cleansing and prevention of allergenic pollen protein accumulation (timothy grass pollen) in the hair follicles – In vitro test - 2021 (2) Clinical study carried out on 44 subjects with Irritative contact dermatitis and Allergic contact dermatitis during 28 days – Brazil - 2021