

ATODERM INTENSIVE BAUME
AN EFFICACY CLINICALLY PROVEN FOR 10 YEARS



ATOPIC ECZEMA PRONE SKIN

IMMEDIATE EFFICACY

ANTI-ITCHING

95%
Reduces the itching sensations⁽¹⁾

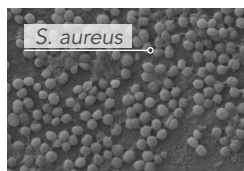
LONG-LASTING EFFICACY

SPACING OUT FLARE-UPS

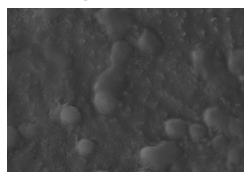
6 months
Whitout flare-ups⁽²⁾

NEW DATA ⁽³⁾

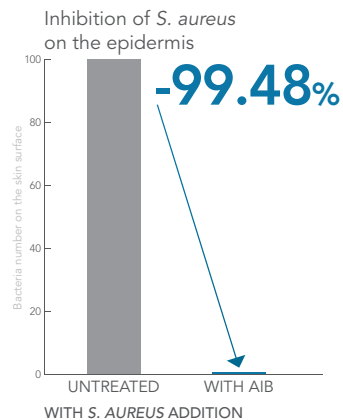
Inhibition of *S. aureus* tested on *in vitro* skin



UNTREATED




WITH ATODERM INTENSIVE BAUME



1- Clinical study, 610 subjects for 21 days. 2- For 76% of patients - Clinical study, 130 subjects for 6 months. 3- Inhibition on *S. aureus* tested *in vitro* on reconstructed epidermis after 24h of incubation with or without AIB. NAOS, SAS with a capital of € 43,474,650, R.C.S. Aix-en-Provence B535 236 418, 355 rue Pierre-Simon Laplace 13290 Aix-en-Provence.MQ-AB(xxxx)April 2023.

ATODERM INTENSIVE BAUME
NEW PROOF OF EFFICACY



SENILE XEROSIS

IMMEDIATE EFFICACY

SKIN NUTRITION

94%
Skin is immediately nourished⁽⁴⁾

LONG-LASTING EFFICACY

SKIN COMFORT

88%
Skin is long lastingly soft and supple⁽⁴⁾

THE REFERENCE WEBSITE FOR PATIENTS

A COMPLETE SUPPORT:
PHYSICAL & PSYCHOLOGICAL
FOR AN IMPROVED QUALITY OF LIFE

For more informations, consult:
www.bioderma.com

#JOINTHEATODERM CROWD

4- Use test, 32 subjects for 28 days.

ECOBIOLOGY AT THE SERVICE OF DERMATOLOGY

Learn more about NAOS, French ecobiology company founder of BIODERMA, on www.naos.com



BIODERMA
LABORATOIRE DERMATOLOGIQUE



Atoderm
DAILY LIFE CHANGER

DRY & ECZEMA PRONE SKIN

ALL LIFE LONG SKINCARE

Atoderm Intensive baume



For 10 years, the ecobiological skincare expert for extreme dryness management

INDICATIONS

Atopic dermatitis,
Allergic contact dermatitis,
Irritative contact dermatitis,
Senile xerosis,
Severe dryness

For the whole family



Body



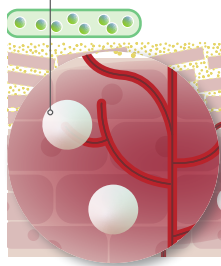
ATODERM INTENSIVE BAUME
THE DAILY SKINCARE
FROM 0 TO 99 YEARS OLD

MODE OF ACTION

1. SOOTHES ITCHING

PEA
(PalmitoylEthanolAmide)

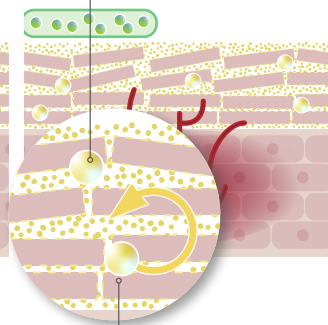
Acts on 3 biological mechanisms (TRPV-1, CB2, PPAR-α).



2. STRENGTHENS SKIN BARRIER

LIPIGENIUM™

Biomimetic lipids (ceramides, cholesterol & phytosphingosine) that **immediately nourish** and **improve lipids and protein synthesis** for a long-lasting skin barrier reinforcement.



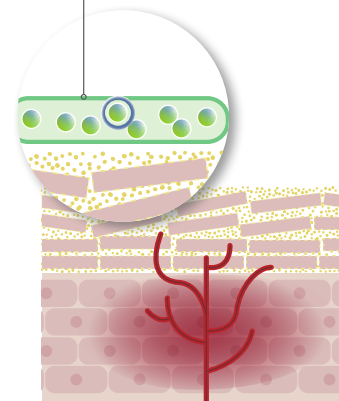
Proteins & lipids synthesis

3. SPACES OUT FLARE-UPS

BIODERMA EXCLUSIVITY

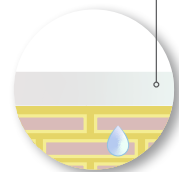
SKIN BARRIER THERAPY™

Limits *S. aureus* adhesion and its proliferation as a biofilm.



4. PROTECTION

Leaves a **protective film** against fabric frictions on skin.



- The skin is **nourished, moisturized** and its barrier is **reinforced**.
- The itching sensations are **soothed**.

